

V:\ReelLibrary\CADDStandards\Bentley\Organization\SAAS\_Standards\Utility\Print\_Drivers\date.tbl

Default 1:2500

9/25/2024 8:44:59 AM

OpenRoadsDesigner\_SAA V:\Projects\2024\1231501\Deliverables\1231501\_YANKTON\_CO\_CUP\_SITE\_PLAN\_CRD.dgn

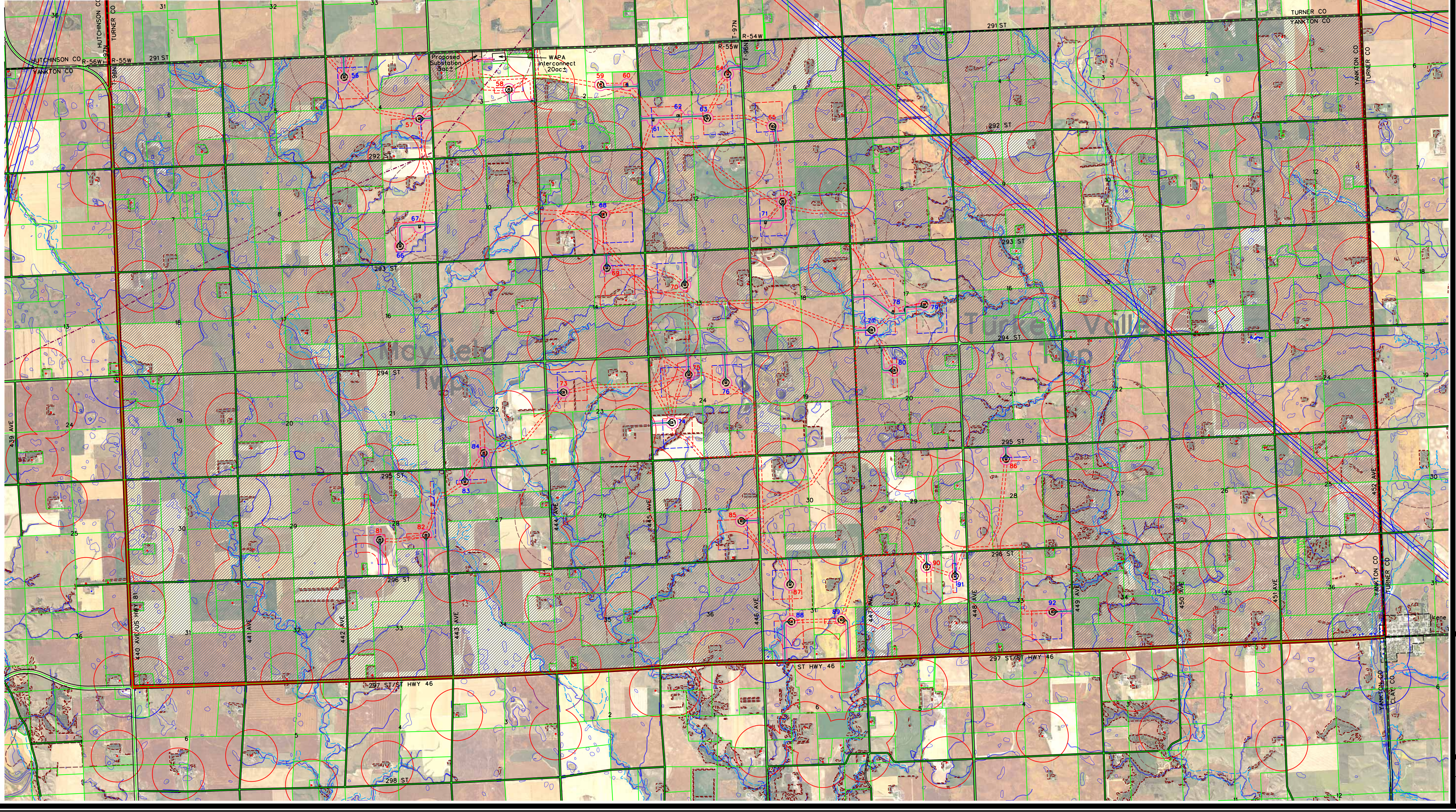
**LEGEND**

- 92 GE 2.82MW TURBINE WITH NUMBER (89 Meter Hub Height & 127 Meter Rotor Diameter) 06-26-24 Array 71 Turbines 56, 61-63, 66-68, 71, 74, 76-80, 83, 84, 86, 89, 91 & 92
- 90 GE 2.82MW TURBINE WITH NUMBER (89 Meter Hub Height & 127 Meter Rotor Diameter) NR0106 06-28-24 Array 71 Turbines 57-60, 64, 65, 69, 70, 72, 73, 75, 81, 82, 85-87 & 90.
- ACCESS ROAD
- TEMPORARY ACCESS ROAD/TURNAROUND (24')
- TEMPORARY CRANE PATH (100')
- UNDERGROUND COLLECTION
- TRANSMISSION LINE
- CONSTRUCTION EASEMENT
- PERMANENT EASEMENT
- PROPERTY BOUNDARY
- EXISTING ROAD RIGHT-OF-WAY
- EXISTING TRANSMISSION LINE
- BEAM PATHS (63.5M • 10m • 242' BUFFER)
- PROPERTY LINE SETBACK • 1.1 x HT • 55'
- PUBLIC ROW SETBACK • 1.1 x HT • 55'
- FEMA FLOODPLAIN
- NW/ND & WETLANDS, WATERBODIES & STREAMS
- NLEB & TRICOLORED BAT HABITAT
- AVIAN USE 100M & 800M BUFFER NTS
- PARCELS NOT CONTACTED
- PROJECT BOUNDARY
- RESIDENCE SETBACK 1320' NTS
- COMMERCIAL BUILDING SETBACK 1320' NTS
- PUBLIC BUILDING SETBACK 1320' NTS

SCALE (FEET) 0 2500

ISSUE DATE: 09-25-2024

Turbine No	Latitude(DD)	Longitude(DD)	Turbine No	Latitude(DD)	Longitude(DD)	Turbine No	Latitude(DD)	Longitude(DD)
56	43.16653747	-97.35449266	69	43.13860611	-97.30582439	81	43.1018594	-97.35089305
57	43.16034729	-97.34050111	70	43.13586574	-97.29109635	82	43.10228135	-97.34208298
58	43.16398576	-97.32325485	71	43.14409352	-97.2753359	83	43.10955235	-97.33431594
59	43.16416915	-97.30575762	72	43.14697731	-97.27190984	84	43.1134411	-97.33052316
60	43.16407637	-97.30071673	73	43.12150569	-97.31492583	85	43.10266474	-97.28201727
61	43.15898164	-97.29599943	74	43.11673676	-97.29450514	86	43.10992285	-97.23122764
62	43.15948524	-97.29112686	75	43.12331173	-97.29099108	87	43.09356285	-97.27316715
63	43.15897133	-97.28566765	76	43.12201821	-97.2839834	88	43.08839432	-97.27317724
64	43.16500453	-97.28147638	77	43.12860795	-97.25589181	89	43.08836802	-97.26370554
65	43.15749762	-97.27329839	78	43.13107355	-97.2516539	90	43.09531841	-97.24709329
66	43.14268241	-97.34500016	79	43.13189117	-97.24565542	91	43.09385875	-97.24175322
67	43.1452656	-97.34119206	80	43.12288273	-97.25187494	92	43.08839035	-97.22351768
68	43.1461027	-97.30614611						



MARK	REVISION	DATE	BY
BF	Checked By:	MCG	Scale: 1" = 2500'
DW	Date:	5/8/24	Field Bk: Pg:

Project No: 1231501

Sheet 1 of 1

**SWAN LAKE WIND**

**YANKTON CO CUP SITE PLAN**

**SNYDER & ASSOCIATES, INC.**

YANKTON COUNTY, SOUTH DAKOTA

231 BENNETT AVENUE  
COUNCIL BLUFFS, IA 51503  
712-322-3202 | www.snyder-associates.com

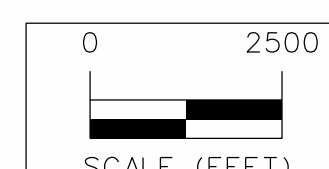
Project No: 1231501

Sheet 1 of 1

V:\RefLibraries\CADDStandards\Bentley\Organization\Chin\SAAS\_Standards\10\_12\_02\_40\PenTables\date.tbl  
 V:\Projects\2023\1231501\Deliverables\1231501\_YANKTON\_CO\_CUP\_SITE\_PLAN\_AU\_CRD.dgn  
 9/25/2024 2:06:17 PM  
 Default 1:2500  
 V:\RefLibraries\CADDStandards\Bentley\Organization\Chin\SAAS\_Standards\10\_12\_02\_40\PenTables\date.tbl  
 V:\Projects\2023\1231501\Deliverables\1231501\_YANKTON\_CO\_CUP\_SITE\_PLAN\_AU\_CRD.dgn

**LEGEND**

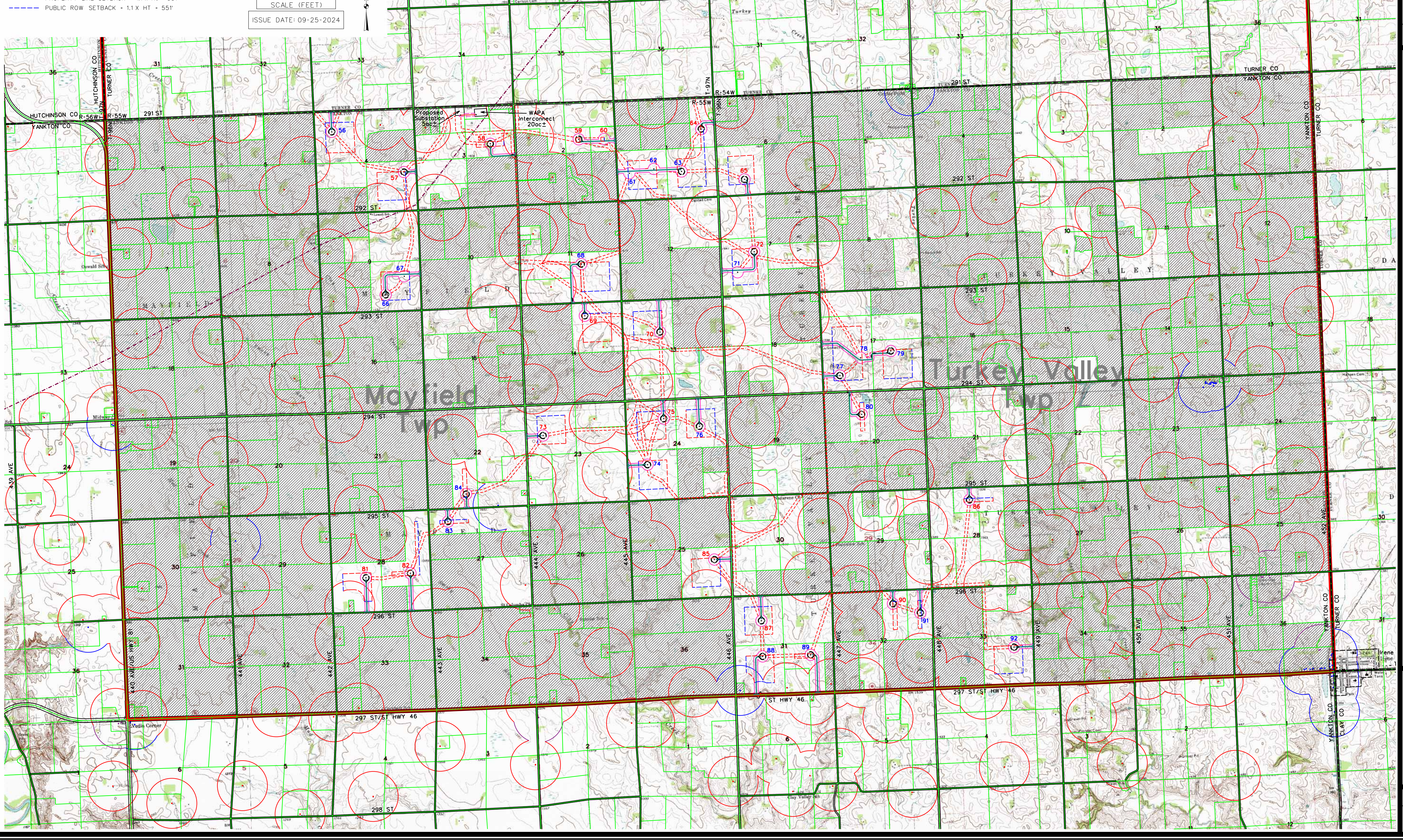
- 92 GE 2.82MW TURBINE WITH NUMBER (89 Meter Hub Height & 127 Meter Rotor Diameter 06-26-24 Array Turbines 56, 61-63, 66-68, 71, 74, 76-80, 83, 84, 88, 89, 91 & 92)
- 90 GE 2.82MW TURBINE WITH NUMBER (89 Meter Hub Height & 127 Meter Rotor Diameter NRO106 06-26-24 Array Turbines 57-60, 64, 65, 69, 70, 72, 73, 75, 81, 82, 85-87 & 90)
- ACCESS ROAD
- TEMPORARY ACCESS ROAD/TURNAROUND (24')
- UNDERGROUND COLLECTION
- TRANSMISSION LINE
- CONSTRUCTION EASEMENT
- PERMANENT EASEMENT
- PROPERTY BOUNDARY
- EXISTING ROAD RIGHT-OF-WAY
- EXISTING TRANSMISSION LINE
- PROPERTY LINE SETBACK • 1.1 x Ht • 55'
- PUBLIC ROW SETBACK • 1.1 X HT • 55'
- PARCELS NOT CONTACTED
- PROJECT BOUNDARY
- RESIDENCE SETBACK 1320' NTS
- COMMERCIAL BUILDING SETBACK 1320' NTS
- PUBLIC BUILDING SETBACK 1320' NTS



SCALE (FEET)

ISSUE DATE: 09-25-2024

Turbine No	Latitude(DD)	Longitude(DD)	Turbine No	Latitude(DD)	Longitude(DD)	Turbine No	Latitude(DD)	Longitude(DD)
56	43.16653747	-97.35449266	69	43.13860611	-97.30582439	81	43.1018594	-97.35089305
57	43.16034729	-97.34050111	70	43.13586574	-97.29109635	82	43.10228135	-97.34208298
58	43.16398576	-97.32325485	71	43.14409352	-97.27533359	83	43.10955235	-97.33431594
59	43.16416915	-97.30575762	72	43.14697731	-97.27190984	84	43.1134411	-97.33052316
60	43.16407637	-97.30071673	73	43.12150569	-97.31492583	85	43.10266474	-97.28201727
61	43.15898164	-97.29599943	74	43.11673676	-97.29450514	86	43.10992285	-97.23122764
62	43.15948524	-97.29112686	75	43.12331173	-97.29099108	87	43.09356285	-97.27316715
63	43.15897133	-97.28566765	76	43.12201821	-97.2839834	88	43.08839432	-97.27317724
64	43.16500453	-97.28147638	77	43.12860795	-97.25589181	89	43.08836802	-97.26370554
65	43.15749762	-97.27329839	78	43.13107355	-97.2516539	90	43.09531841	-97.24708329
66	43.14268241	-97.34500016	79	43.13189117	-97.24565542	91	43.09385875	-97.24175322
67	43.1452656	-97.34119206	80	43.12288273	-97.25187494	92	43.08839035	-97.22351768
68	43.1461027	-97.30614611						



**SWAN LAKE WIND**

**YANKTON CO CUP SITE PLAN**

**SNYDER & ASSOCIATES, INC.**



Project No: 1231501  
Sheet 1 of 1

YANKTON COUNTY, SOUTH DAKOTA

231 BENNETT AVENUE  
COUNCIL BLUFFS, IA 51503  
712-322-3202 | www.snyder-associates.com

MARK: \_\_\_\_\_  
Engineer: BF  
Technician: DW

REVISION: \_\_\_\_\_  
Checked By: MCG  
Date: 5/8/24

DATE: \_\_\_\_\_  
BY: \_\_\_\_\_  
Scale: 1" = 2500'  
Field Bk: \_\_\_\_\_  
Pg: \_\_\_\_\_

Project No: 1231501  
Sheet 1 of 1